



Rapid2

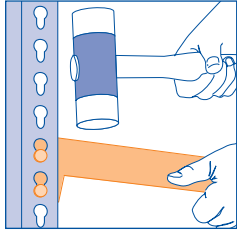
Economy storage

Assembly instruction

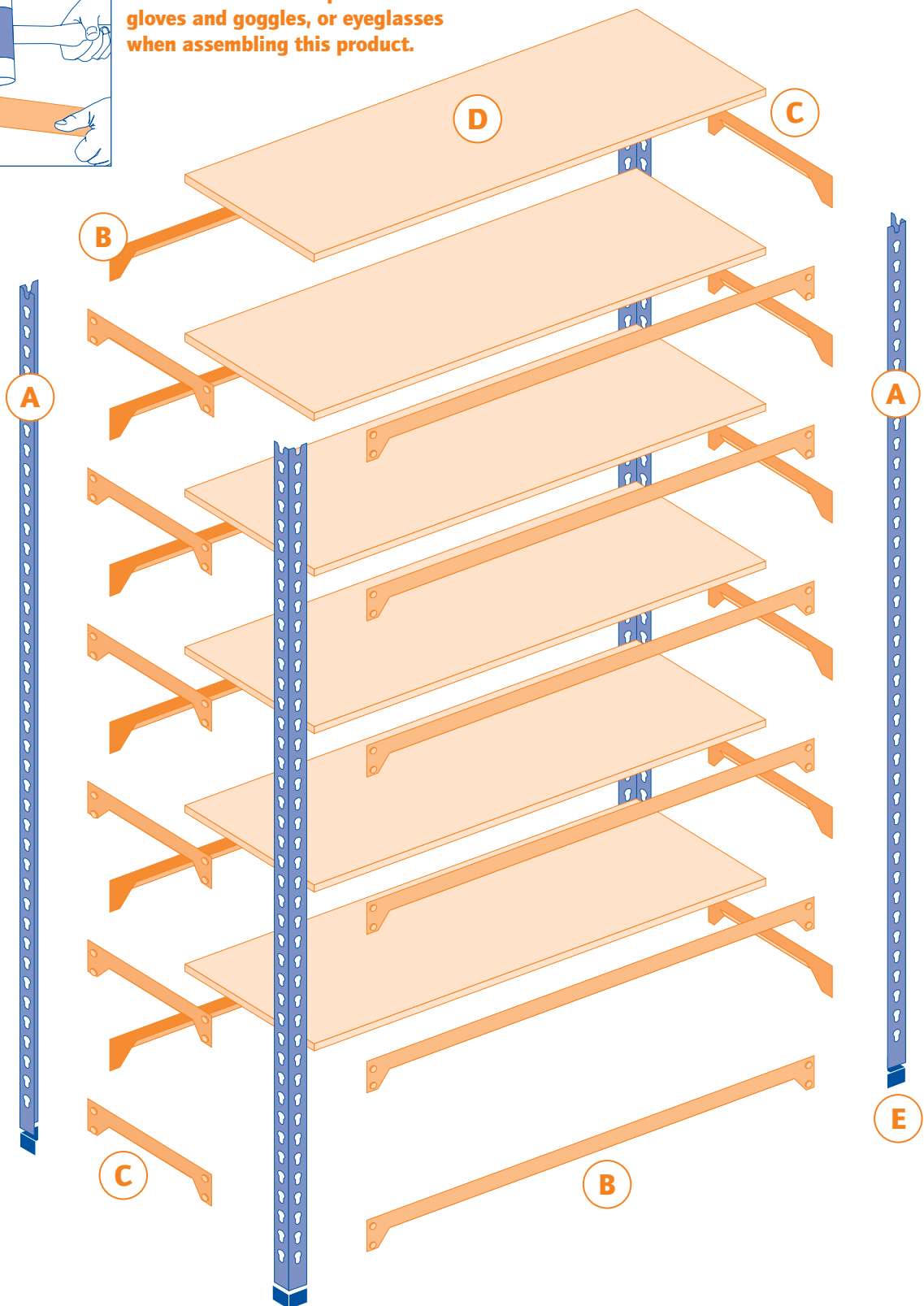
FAMILY
MEMBER OF



Tools required: Rubber mallet



We advise the use of protective gloves and goggles, or eyeglasses when assembling this product.

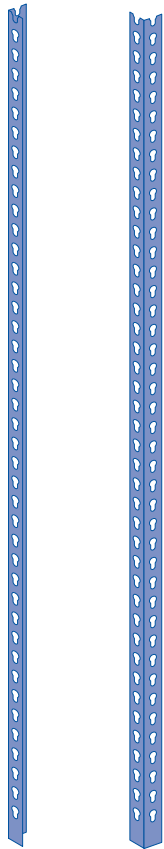


BAY ASSEMBLY

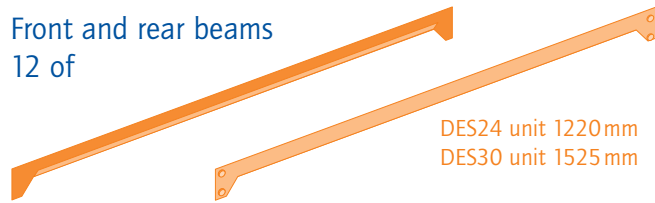
- 1 Fit plastic feet **E** to uprights **A**.
- 2 Assemble both ends first - **A** and **C**. Starting from the top allow 6 clear holes between each shelf support **C**.
- 3 Join both ends using front and rear beams **B**.
- 4 Add shelves **D**.

COMPONENTS

A 1600 mm Uprights
4 of

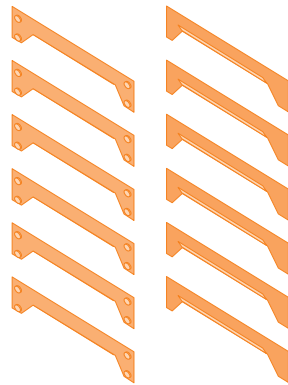


B Front and rear beams
12 of

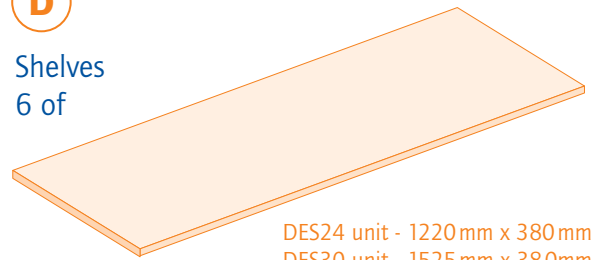


DES24 unit 1220 mm
DES30 unit 1525 mm

C 380 mm side beams
12 of



D Shelves
6 of

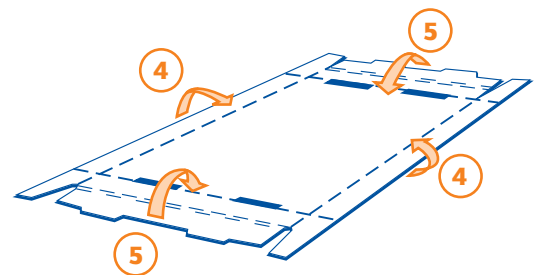
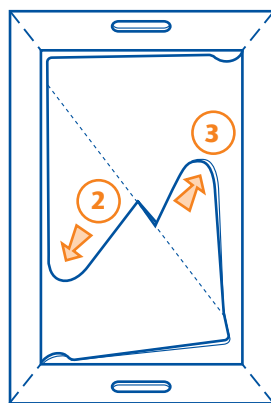
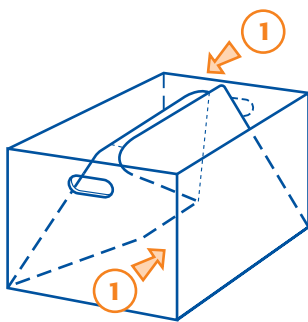


DES24 unit - 1220 mm x 380 mm
DES30 unit - 1525 mm x 380 mm

E Plastic feet
4 of



BOX ASSEMBLY



SAFETY

<p>Keep heavier items on the bottom shelves</p>	<p>Keep your shelving dry</p>	<p>Do not climb on your shelving</p>	<p>Make sure it is on a level and even floor</p>	<p>Tie plates recommended with more than one bay</p>	

IMPORTANT - ASSEMBLY INSTRUCTIONS